

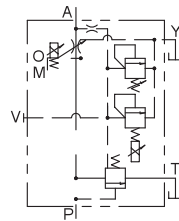


PROPORTIONAL ELECTRO-HYDRAULIC RELIEF AND FLOW CONTROL VALVE

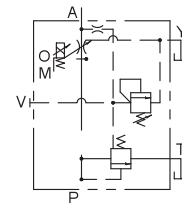
EFRD-G03&06 SERIES



JIS GRAPHIC SYMBOLS



With Proportional Pilot Relief Valve



Without Proportional Pilot Relief Valve

SPECIFICATIONS

Series	Max. Operated Pressure	Max. Flow	Weight	Controls Mode	Coil Resistance	Magentic Hysteresis	Repeatability	Others
EFRD-G03 _ * * * _ 31	245bar	160L/min	-6: 16kg	Flow Controls	45Ω(20℃)	≤4%	≤1%	Differential Pressure 6 bar
			-5: 14kg	Pressure Controls	11Ω(20℃)	≤2%	≤1%	
EFRD-G06 _ * * * _ 31	245bar	250L/min	-6: 30kg	Flow Controls	45Ω(20℃)	≤4%	≤1%	Differential Pressure 7 bar
			-5: 28kg	Pressure Controls	11Ω(20℃)	≤2%	≤1%	

HOW TO ORDER

EFRD	-G	03	-160	-2	-6	-31
Series	Mounting Style	Nominal Size	Max. Metered Flow(L/min)	Pressure Adj. Range(bar)	Proportional Pilot Relief Valve Option	Design Code
Proportional Electro-hydraulic Relief And Flow Control Valve	Subplate Mounted	03	160: 8-160	2: 14-157 3: 14-245	5: Without Proportional Pilot Relief Valve (Flow Controls) 6: With Proportional Pilot Relief Valve (Pressure and Flow Controls)	31: With Safety Valve
		06	250: 10-250			